
ECOLOGICAL AND GENETIC DRIVERS OF CASSAVA MOSAIC DISEASE VIRUSES: CASE STUDY IN YANGAMBI, DRC

Prof. Albert Mbuyi¹, Dr. Andreas Fischer², Dr. Claire Dubois³

Institut Facultaire des Sciences Agronomiques de Yangambi, Laboratoire de Phytopathologie, Box 1232
Kisangani, Democratic Republic of Congo¹

Plant Virus Collection; DSMZ Deutsche Sammlung von Mikroorganismen und Zellkulturen GmbH Messeweg
11/12 38104 Braunschweig, Germany²

Université catholique de Louvain, Earth & Life Institute, Applied Microbiology - Phytopathology, Croix du sud
2 bte 3 B1348 Louvain-la-Neuve, Belgium³

Abstract

Cassava mosaic disease (CMD) poses a significant threat to cassava cultivation in Africa, with devastating consequences for the agricultural sector. It is widely recognized as a primary concern in the region due to its destructive impact on cassava crops. The prevalence of dual infections involving African cassava mosaic virus (ACMV) and East African cassava mosaic virus-Uganda (EACMV-UG) is particularly associated with the extensive spread of CMD across the continent. This phenomenon has been well-documented in various studies, highlighting the critical role of these viruses in CMD proliferation. Notably, CMD's expansion has been traced from its epicenter in Uganda to neighboring countries, including the Democratic Republic of Congo (DR Congo).

Keywords: Cassava mosaic disease, CMD expansion, African cassava mosaic virus, ACMV, East African cassava mosaic virus-Uganda, EACMV-UG, Africa,

Introduction

Cassava mosaic disease (CMD) is considered as one of the major threat and a most devastating disease for cassava in Africa (Bisimwa *et al.*, 2019; Legg *et al.* 2015; Alabi & Naidu, 2011; Otim-Nape *et al.*, 2000; Thresh *et al.*, 1994). Dual infections with ACMV & EACMV-UG are especially associated with severe CMD expansion through Africa (Monde *et al.*, 2012; Matic *et al.*, 2012; Basavaprabhu *et al.*, 2009; Ndunguru *et al.*, 2005; Legg & Fauquet, 2004; Legg, 1999; Zhou *et al.*, 1997). This expansion is from Uganda to neighbouring countries like in Democratic Republic of Congo (DR Congo).

CMD associated begomoviruses have bipartite genomes with DNA components A & B.

DNA A encodes for genes involved in the encapsidation (CP), the viral replication (AC1 and AC3), and the transcription activation (AC2) while DNA-B genes (BC1, BV1) are involved in the cell-to-cell movement, host range and symptom modulation (Ndunguru *et al.*, 2005; Stanley *et al.*, 2004). Differential roles of AC2 and AC4 of CMD viruses in the suppression of cassava mechanism of defence were largely described by Vanitharani *et al.* (2004). Such viruses are transmitted by whiteflies (*Bemisia tabaci* Gennadius - *Hemiptera*, *Aleyrodidae*) in a circulative manner (Njoroge *et al.* 2017; Maruthi *et al.* 2017, 2005; Legg *et al.*, 2006; Jones, 2003, Deng *et al.*, 1994).

Super-abundant whiteflies has been associated with the viral epidemic of CMD (Bisimwa *et al.* 2019; Colvin *et al.*, 2004; Legg & Thresh, 2000; Legg & Ogwal, 1998).

The presence of cassava has been reported for long in the Yangambi area, in DR Congo. For a long time, neighbouring populations the stations of Agriculture Research of Yangambi have cultivated cassava as their major staple food crop in various agrosystems. Such crop is distributed in what is considered as one of the most diversified ecosystem in the world, in both spatial continuous or discontinuous cropping areas. CMD was also reported since 1929 by Kufferath & Ghesquiere (1932) in the DR Congo and later identified as caused by *African cassava mosaic virus*. Though variants of the severe-associated EACMV-UG have already been reported from DR Congo, both on East and West sides of the country (Legg *et al.*, 2006; Legg, 1999). Questions were raised about the presence and type of virus associated with CMD in such a hotspot for biodiversity.

The Yangambi forest is now a protected area into the Congo basin rainforest (Duveiller *et al.*, 2008; Makana & Thomas, 2006). Considering the “diversity stability hypothesis” (Tilman *et al.*, 2006; 2002; Hopper *et al.*, 2005), one could expect that the impact of an outbreak like CMD would be less important in highly diverse agro-ecosystem than in areas where agricultural practice might reduce the ability of ecosystems to mitigate the effects of plants disease epidemic. Thresh (1991) also pointed out the possible impact of changing cropping practices on tropical plant viruses.

Around Yangambi, several ecosystems have been previously described as evergreen humid forest, mix secondary forest and deciduous high forest have driven to different systems of cassava grown. Spatial discontinuous system of cassava cultivation is practiced in the humid forest, contrariwise to the spatial continuous cropping system in the mix secondary forest. The micro climatic conditions and vegetation zones encountered in this region with such a diversity in cassava cultivation makes the area a suitable zone for studying the behaviour of CMD according to the cassava agro-ecosystem.

Indeed, other geminiviruses have already been studied in relationship to the agro-ecosystems where they are found. In Mediterranean basin around Spain and Italy, the high structuration of three isolates of Tomato Yellow leaf curl virus (TYLCV) has been described by Garcia-Andes *et al.*, (2007). Under the island “La Réunion”, Delatte *et al.* (2007) described a founder effect of TYLCV from a low initial genetic diversity among TYLCV-Mld [RE] isolates followed by moderate diversification of the virus population and by a linear increase in genetic diversity across years without geographical structuration in an insular environment.

In Pakistan, Ilyas *et al.* (2010) found a phylogeographical segregation between begomoviruses infecting legumes. In Kenya, Bull *et al.* (2006) have showed differences in the type of EACMV found along the coastal Indian Ocean as compared to areas of higher altitude in Western and Central Kenya.

This study shows a differential distribution of both ACMV & EACMV-UG according to their virulence as well as by systematic comparison of the sequences of the AC2/AC4 genes.

Materials and Methods Sampling

Cassava leaves and cuttings (140 samples), up to 100 weeds or intercropped culture of species in Fabaceae family supposed to be alternate hosts of CMBs and 132 adults whiteflies (*B. tabaci*; *Aleyrodidae*, *Hemiptera*) were collected in cassava fields for molecular analysis. A total of 120 cassava

fields were investigated in reason of 10 fields per village. Study area was 150 Km circle around the Agricultural Research Centre of Yangambi as well as in the evergreen humid forest and in the mix secondary forest. Fabaceae species sampled were *Arachis hypogaea* L. 1753, *C. pubescens* Benth, *Glycine max* (L.) Merr. (soja) 1917, *Leucaena leucocephala* (Lam.) De Witt, 1961, *Phaseolus vulgaris* L. 1753, *Psophocarpus scandens* (Endl.) Verdc 1968, *P. javanica* (Benth.) Benth 1864, *Senna occidentalis* (L.) Link 1829, *Vigna unguiculata* (L.) Walp 1843 and *Vigna vexillata* (L.) A. Rich 1845. Plants were selected on the basis of the presence of *B. tabaci* on their leaves or for the presence of mosaic symptoms on those leaves and their abundance in cassava fields as weeds or in intercropping systems. In cassava fields investigated, the incidence of CMD, the disease severity and the numbers of whiteflies per shoot were systematically evaluated. The severity was evaluated by scale from 1 to 5 used in IITA (Hahn et al., 1980) where 1: Symptom-free and 5: Severe chlorosis, leaf distortion and stunting. The incidence was obtained in ratio to diseased plants and the total cassava plants. Whiteflies were counted and collected in the three first apical cassava leaves. Samples were brought in Plant Pathology laboratory, University catholic of Louvain (UCL), Belgium, for molecular analysis. Molecular data obtained after analysis were reported in the geographic map of Yangambi (Fig. 1) provided by UCL-Geomatics, UCL, Belgium.

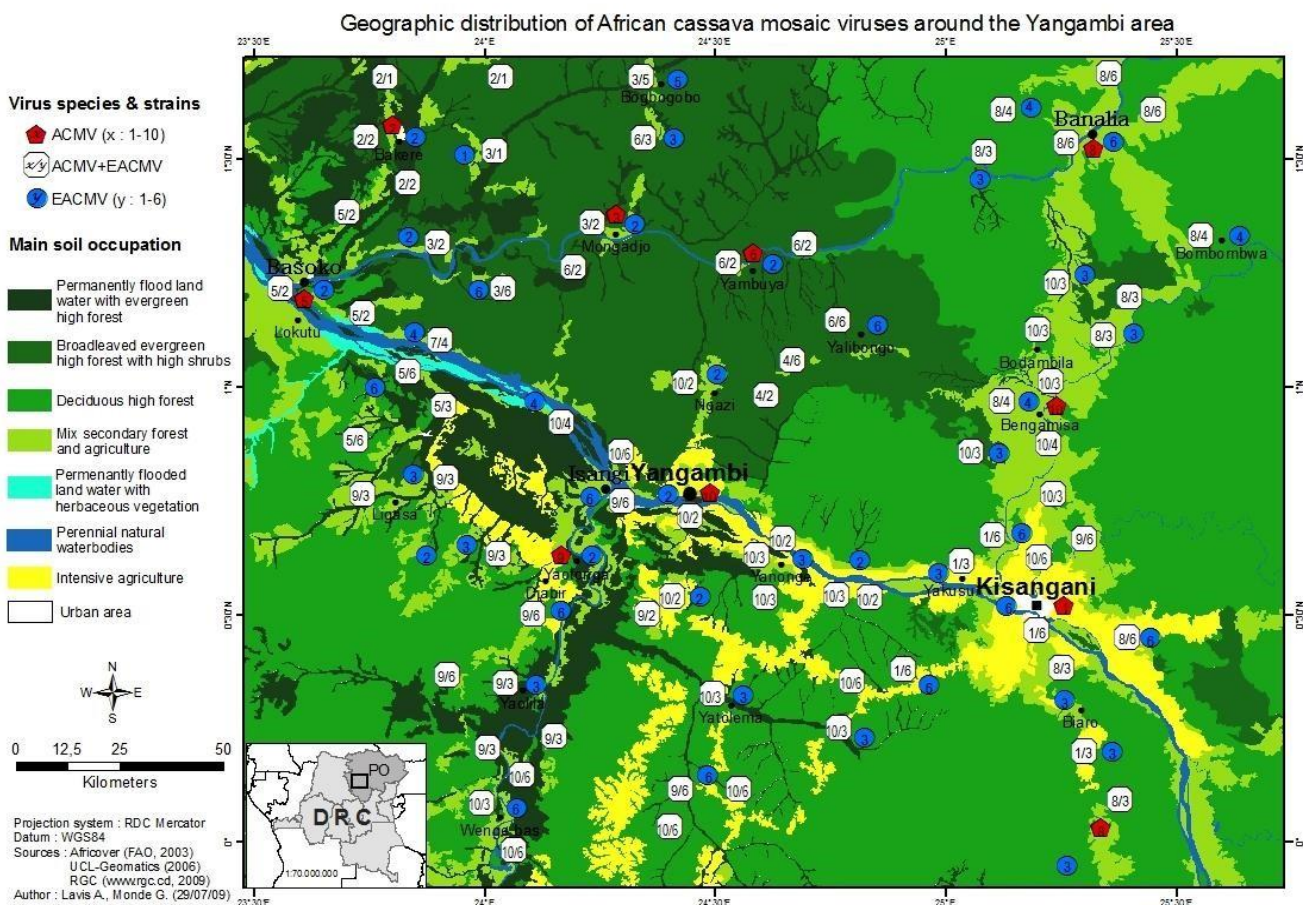


Fig. 1: Geographic distribution of CMBs in function of agroecosystems in the Yangambi area. The locations of sampling were made in basis of the general card of DR Congo (UCL-Geomatics, Louvain-la-Neuve, Belgium). In a total of 140 cassava diagnosed, 10 different isolates of ACMV and 6 isolates of EACMV-UG were identified by molecular analysis in base of gene AC2 and AC4. The main isolates of ACMV are represented in the card by numbers indicating the following accessions **1:**Ybi1-FN435255 **2:**Ybi2-FN435256 **3:**Ybi3-FN435257 **4:**Ybi4-FN435258 **5:**Ybi5-FN435259 **6:**Ybi6-FN435260 **7:**Ybi7-FN435261 **8:**Ybi8-FN435262 **9:**Ybi9-FN435263 **10:**Ybi10-FN435264. For isolates of EACMV-UG, the following accessions were represented by numbers in the card **1:**Ybi1-FN435265 **2:**Ybi2-FN435266 **3:**Ybi3-FN435267 **4:**Ybi4-FN435268 **5:**Ybi5-FN435269 **6:**Ybi6-FN435270. Fractional numbers (x/y) represent the dual infection of ACMV+EACMV-UG in the same sample collected in this location.

The distribution of ACMV isolates is related to the principal agroecosystems and secondarily to the main circulation pathways. In the evergreen humid forest of Yangambi in which cassava cropping is in the spatial and temporal discontinuous system; the isolates **2:**Ybi2-FN435256 ; **3 :**Ybi3-FN435257; **4 :**Ybi4-FN435258 ; **5:**Ybi5-FN435259 ; **6:**Ybi6-FN435260 and **7:**Ybi7-FN435261 are restricted; whereas in the secondary forest zone in which cassava is in a non-discontinuous intensive cultivation the main isolates spread are **1:**Ybi1-FN435255; **8:**Ybi8-FN435262; **9:**Ybi9-FN435263 and **10:**Ybi10-FN435264. EACMV-Ybi1 and EACMV-Ybi5 are adapted in the evergreen forest; other EACMV-UG isolates are randomly spread as well in primary forest as in the mix secondary forest.

DNA extraction, PCR amplification and sequencing

DNA was extracted from plants leaves by using FastDNA® Kit with a FastPrep® Instrument (Q.Biogene, Inc., CA). The extract DNA was quantified by reading the absorbance (A) at 260/280 nm in Nanodrop. For whiteflies, DNA extraction has consist to crush five adults whitefly into a tube of 200 µl in 50 µl of TE buffer (Tris HCl 10 mM, pH 8, EDTA 1 mM) and to heat at 90°C for 15 min. The tube was then centrifuged at 13.000 trs/min to precipitate the debris. The supernatant was directly used as DNA for PCR. Specific nucleotides primers for AC2 and AC4 genes used in PCR were designed by Monde *et al.* (2010).

The mix PCR was prepared in a final volume of 50 µl using H₂O depec 26.25µl, MgCl₂ 25 mM 5µl, GoTaq® 5x flexi buffer 10µl, DNTP 100 mM 1.5µl, each upstream and downstream primer 1µl, GoTaq® DNA polymerase (Promega) 5 units/µl 0.25 µl, extract DNA 5µl.

The PCR was cycling by a the rmocycler iCycler Biorad® version 4.006 at 94°C for 2 min for denaturizing, followed of 38 cycles of amplification at 94°C for 30 sec for denaturizing; hybridization at 58°C for 30 sec; 72°C for 1 min for elongation. The final elongation has been done at 72° C for 7 min. The revelation was made in 1.2 % agarose gel under UV after electrophoresis at 120V in ethidium bromide.

Partial sequences produced from Biosequencer Genetic Analyser 3100 after direct sequencing were assembled using the software Vector NTI® Advance11 (Invitrogen). Each amplicon was sequenced many times forward and reverse.

Nucleotides sequence was translated in amino acids by a molecular toolkit (www.vivo.colostate.edu). The expressed mutations in amino acids sequences are shown in front of respective phylogenetic trees by alignment (Fig. 2, Fig.3).

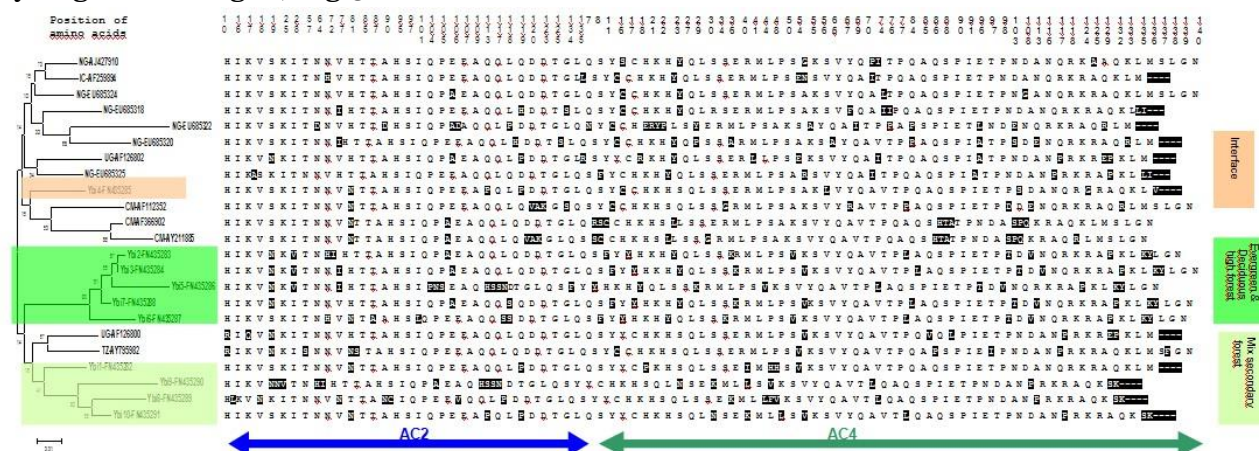


Fig. 2: Phylogenetic tree based on concatenated sequences of amino acids of genes AC2 and AC4 for ACMV inferred from the neighbour-joining method using MEGA Software version 4.1 with complete deletion option (ClustalW). Bootstrap values (1000 replicates) are shown as percentages in the branches (Tamura et al., 2007). The isolates Ybi1-10 are the different isolates of ACMV identified from Yangambi region in the accessions beginning by FN; UG: Uganda; CM: Cameroon, NG: Nigeria & TZ: Tanzania.

The isolates of Yangambi are clustering in 3 groups: the first cluster regroupsisolate Ybi4 & others in the interface, the second consists to 4 isolates (Ybi1,8,9,10) which have a premature codon stop in gene AC4 closely related to the mix secondary forest; the third consists to five isolates Ybi2,3,5,6,7 which have formed an apart clusterrelated with the evergreen forest.

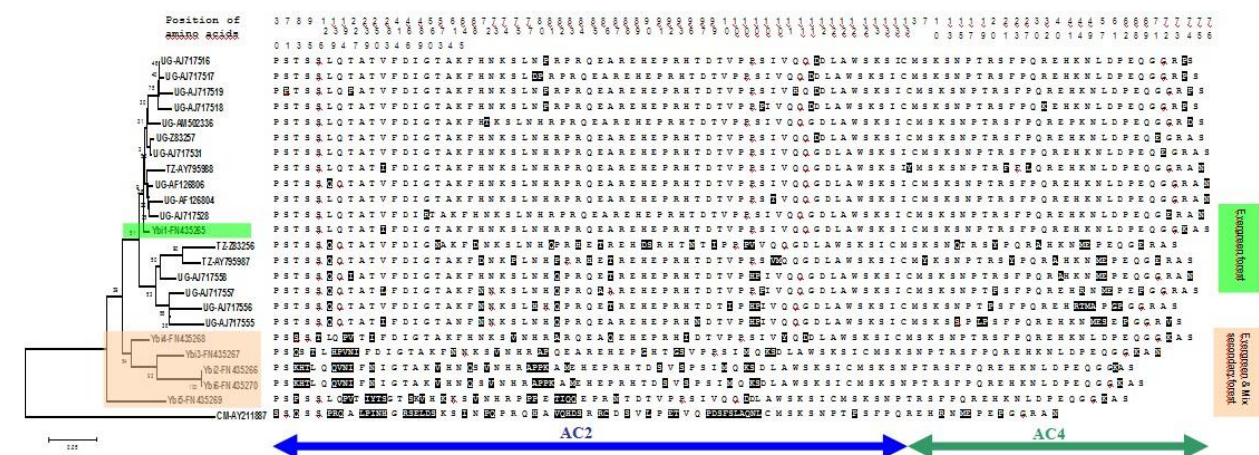


Fig. 3: Phylogenetic and molecular analyse based on amino acids in concatenated sequence of genes AC2 and AC4 for EACMV-cassava virus positive inferred from the Neighbour-joining method using MEGA version 4.1 with complete deletion option. Bootstrap values (1000 replicates) are shown as

percentages in the branches (Tamura *et al.*, 2007). The isolates Ybi 1-6 are the EACMV isolates identified in cassava from Yangambi which the accessions begin by FN; also UG: Uganda; TZ: Tanzania. The strains of Yangambi are clustered with Ugandan and Tanzanian strains. The isolates from Yangambi have formed 2 clusters indicating the presence of 2 major strains of EACMV associated in CMD. In the phylogenetic tree, 5 isolates from Yangambi FN435266, FN435267, FN435268, FN43569 and FN435270 have presented an apart cluster and they have shown much expressed mutations in amino acids sequences. The isolate FN435265 has presented the proximity with Tanzanian and Ugandan's strains. It may be the presence of 2 main strains of EACMV-UG which involve in epidemic of CMD in Yangambi.

Phylogenetic trees were carried out by using MEGA4.1 Software (Tamura *et al.*, 2007) based on concatenated amino acids sequences of AC2 & AC4 of CMBs isolates available in NCBI GenBank, that included the concatenated amino acids sequences of AC2 & AC4 of CMBs isolated from Yangambi. The evolutionary history was determined using the Neighbour-Joining method with the complete deletion option and 1000 replicates for bootstrap values.

Results Dual infection by CMD-virusesis common in Yangambi

The investigations in principal agro-ecosystems showed the presence of a largest proportion of dual infection (66%), followed by infection in EACMV-UG (26%) and by infection in ACMV (5%) in cassava. 3% of cassava sampled were CMD-virus free. A high percentage of adults whiteflies infected viruses was also found in the similar proportions ACMV+EACMV-UG (59%), EACMV-UG (29%) and ACMV (8%). Only a few (4%) of the whiteflies tested were virus-free in the Yangambi area. Furthermore, both viruses ACMV & EACMV-UG were detected in dual infection in *Centrosema pubescens* Benth and *Pueraria javanica* (Benth) Benth (Fabaceae) developing the same symptoms as CMD, raising the question of a possible involvement of those leguminous in the CMD pathosystem (Shirima *et al.*, 2019; Legg *et al.*, 2015; Monde *et al.*, 2010). This confirms that the spread of CMBs in double infection as a general phenomenon (Colvin *et al.*, 2004).

Our study underlines the prevalence of EACMV-UG and its largely spread in Yangambi (data not shown). The CMD severity scores and the incidence registered in these locations (Table 1) indicate that the strains in secondary forest are aggressive. The high number of whiteflies encountered in the mix secondary forest (Table 1) might explain the high incidence and severity of CMD registered in this intensive cassava cultivation zone. These results corroborate those obtained by Legg & Thresh (2000) in East Africa and Ariyo *et al.*, (2005) in Nigeria.

Cassava mosaic disease severity is related to the agro-ecosystems

CMD is widespread in the North-Eastern DR Congo (Fig.1); its distribution is related to the principal ecosystems and to the main circulation ways. However, CMD severity, incidence as well as the whiteflies frequencies are closely related to the various agro-ecosystems in the Yangambi area (Table 1, Fig.1). In a general manner, the more diverse the ecosystem, the less severe is the cassava mosaic disease. The CMD is moderate in the evergreen forest near the localities of Bakere, Yambuya and Mongandjo, where agricultural activity is less intensive. In these evergreen forest localities dominated by a spatial

discontinuous cassava cultivation, the disease severity was 2.37 ± 0.32 , with an incidence varying from 60–72%. Presence of whiteflies vector is also limited (mean number of whiteflies 6.52 ± 0.94).

In the deciduous high forest near Basoko, where cassava is less intensively cultivated in a spatial discontinuous system, CMD severity was intermediate (3.10 ± 0.32) associated with a less number of whiteflies (7.10 ± 0.74) and an incidence of 70%.

However, CMD displays a higher impact in terms of severity in the deciduous high forest near Yatolema (3.55 ± 0.52) and in Yaolia (3.75 ± 0.46) localities where cassava culture is intensively practiced in a spatial continuous system. A higher disease incidence (70-90%) and number of whiteflies vector varying from 9.12 ± 0.99 to 9.33 ± 1.93 were also registered (Table 1).

The disease is even more severe in the mix secondary forest such as Banalia, Bengamisa, Yangambi, Yaotonga and Yanonge localities where cassava crop is more intensive in spatial continuous system (disease severities ranged from 3.25 ± 0.45 to 4.11 ± 0.33). This high disease severity was associated with higher whiteflies number (number of whiteflies vector 7.72 ± 1.35 to 10.07 ± 1.14) and a disease incidence between 85-95% according to the location.

However, around the Kisangani locality, where cassava production is also the more intensive in spatial continuous cropping system, the severity and incidence of CMD recorded were the highest, respectively 4.05 ± 0.39 and 95%, and also associated with high whiteflies number 10.30 ± 1.17 .

Table 1: Relationship between agroecosystems, CMD severity & incidence, whiteflies abundance and CMD viruses in the region of Yangambi. The accessions of both begomoviruses infecting cassava in the Yangambi region are listed. High disease severity scores [3-5] of CMD is noted in the secondary forest where cassava cultivation is intensive. In the deciduous forest and in the evergreen forest, the disease severity scores varied between [2- 3].

Principal locations and villages	Ecosystems	Cropping system	CMD Viruses isolates *Accessions EMBL/GenBank		Proportion of virus (%)	Mean of whitelines	Incidence mean (%)	Score severity
			ACMV	EACMV				
Banalia	Mix secondary forest and agriculture	Spatial continuous	Ybi8 FN435262	Ybi3, Ybi4, Ybi6 FN435267 FN435268 FN435270	A : 9 E : 36 A+E : 55	7.72±1.35	90	3.73±0.65
Bengamisa	Mix secondary forest and agriculture	Spatial continuous	Ybi8, Ybi10 FN435262 FN435264	Ybi3, Ybi4 FN435267 FN435268	A : 7 E : 29 A+E : 64	10.07±1.14	95	3.79±0.43
Yangambi	Mix secondary forest and agriculture	Spatial continuous	Ybi9, Ybi10 FN435263 FN435264	Ybi2, Ybi4, Ybi6 FN435266 FN435268 FN435270	A:11 E:33 A+E:56	8.00±1.11	85	4.11±0.33
Yaotonga	Mix secondary forest and agriculture	Spatial continuous	Ybi9 FN435263	Ybi2, Ybi3, Ybi6 FN435266 FN435267 FN435270	A:10 E:30 A+E:60	8.10±1.10	85	3.87±0.35
Yanonge	Mix secondary forest and agriculture + intensive agriculture	Spatial continuous	Ybi10 FN435264	Ybi2, Ybi3, Ybi6 FN435266 FN435267 FN435270	A : 8 E : 33 A+E : 59	9.17±1.03	90	3.25±0.45
Kisangani	Mix secondary forest and agriculture + intensive agriculture	Spatial continuous	Ybi1, Ybi8, Ybi9, Ybi10 FN435255 FN435262 FN435263 FN435264	Ybi3, Ybi6 FN435267 FN435270	A : 10 E : 40 A+E : 50	10.30±1.17	95	4.05±0.39
Yatolema	Deciduous high forest + intensive agriculture	Spatial continuous	Ybi9, Ybi10 FN435263 FN435264	Ybi3, Ybi6 FN435267 FN435270	A:11 E : 33 A+E : 56	9.33±1.93	90	3.55±0.52
Yaolila	Deciduous high forest + intensive agriculture	Spatial continuous	Ybi9, Ybi10 FN435263 FN435264	Ybi3, Ybi6 FN435267 FN435270	A : 13 E : 25 A+E : 62	9.12±0.99	70	3.75±0.46
Basoko	Deciduous high forest	Spatial discontinuous	Ybi5, Ybi7 FN435259 FN435261	Ybi2, Ybi3, Ybi4, Ybi6 FN435266 FN435266 FN435268 FN435270	A : 10 E : 30 A+E : 60	7.10±0.74	70	3.10±0.32
Mongandjo	Evergreen forest	Spatial discontinuous	Ybi3, Ybi6 FN435257 FN435260	Ybi2, Ybi5, Ybi6 FN435266 FN435269 FN435270	A : 8 E : 41 A+E : 51	6.33±1.07	72	2.08±0.29
Yambuya	Evergreen forest	Spatial discontinuous	Ybi4, Ybi6 FN435258 FN435260	Ybi2, Ybi6 FN435266 FN435270	A : 13 E : 25 A+E : 62	7.13±0.99	60	2.13±0.35
Bakere	Evergreen forest	Spatial discontinuous	Ybi2, Ybi3, Ybi5 FN435256 FN435257 FN435259	Ybi1, Ybi2 FN435265 FN435266	A : 11 E : 22 A+E : 67	6.11±0.78	65	2.89±0.33

Legend:

A : single infection ACMV E : single infection EACMV-UG A+E: dual infection with ACMV and EACMV-UG

Score severity: 1 – 5; where 1: indicates no symptom and 5 : severe symptom

*The accessions numbers are related to the number in the CMBs molecular distribution in Fig.1

Cassava mosaic begomoviruses reveal an ecophylo geographically distribution in Yangambi

All sequences for AC2 & AC4 from ACMV/EACMV-UG have been listed in EMBL nucleotides database as following accessions FR675645 to FR675825 (180 accessions) and FN435255 to FN435297 (42 accessions). From these sequences, ten different types of ACMV and six different types of EACMV-UG were identified (Table 1).

The ACMV-isolates Ybi2-FN435256, Ybi3-FN435257, Ybi5-FN435259, Ybi6-FN435260 and Ybi7-FN435261 are restricted to the evergreen forest and in the deciduous forest encountered in the localities of Bakere, Yambuya, Mongandjo and Basoko where cassava is cultivated in a spatial discontinuous system (Table 1, Fig. 1). However Ybi4-FN435258 was found at the interface between mix secondary forest and evergreen forest

(Fig.1, Fig.2). Those isolates induced a less severe cassava mosaic. They were found with the lowest incidence of CMD in the area. The ACMV isolates Ybi1-FN435255, Ybi8-FN435262, Ybi9-FN435263 and Ybi10-FN435264

(Table 1, Fig.1) were found globally in the mix secondary forests and/or deciduous high forests in Banalia, Bengamisa, Kisangani, Yangambi, Yaotonga, Yatolema, Yanonge and Yaolila, where cassava crop and agriculture activity are intensive in a spatial continuous cropping system. The isolates ACMV-Ybi4 and ACMV-Ybi7 were identified systematically in double infection exclusively at the boundaries of forest in interface with the mix secondary forest.

Nevertheless, the EACMV-UG isolates Ybi1-FN435265 and Ybi5-FN435269 were restricted only to the evergreen forest in Bakere and Mongandjo.

This specific restriction indicates that these EACMV-UG isolates have been adapted in the primary forest ecosystem. These results corroborate a phylogeographical segregation which was reported between three distinct groups of *Mungbean yellow mosaic Indian virus (Begomovirus)* infecting legumes in Pakistan. The first type occurs across the country, whereas the second type has only been identified in the North of Pakistan; the third type was a recombinant between both (Ilyas *et al.*, 2010).

Diversity of cassava mosaic disease viruses using genes AC2 and AC4

The molecular analysis indicates less diversity in all CMBs strains isolated; only 10 isolates of ACMV (Ybi1-10) and 6 isolates of EACMV-UG -(Ybi1-6) were found in the Yangambi region. The reduced diversity of CMD viruses observed in Yangambi conflicts other studies conducted in Africa (Ariyo *et al.*, 2005; Ndunguru *et al.*, 2005; Were *et al.*, 2004) which reported a high diversity of CMBs strains in CMD epidemic in East Africa. This low diversity of CMBs strains identified was spread according to the various ecosystems (Fig.1). The EACMVUG Ybi1 and Ybi5 restricted into the evergreen forest suggest their adaptation in the primary forest ecosystem or an introduction occurring before the others.

The phylogenetic trees established based on concatenated amino acids of genes AC2 & AC4 showed the presence of ten isolates of ACMV segregated in two clusters (Fig.2) and six isolates of EACMV-UG clustered in two main groups (Fig.3). The first ACMV isolates cluster with truncated AC4 gene presenting a premature codon stop is found associated with more severe disease in cassava in the intensively cropped cassava area around Yangambi dominated by the mix secondary forest and the deciduous high forest (Fig.2). The second cluster with entire AC4 was linked to moderate CMD in the evergreen forest.

For EACMV-UG isolates (Fig. 3), the first cluster is limited in evergreen forest and the second cluster is spread as well in evergreen forest as in mix secondary forest. High expressed mutations in amino acids sequences of AC2 have been displayed by this CMBs group.

Discussion

Phylogeography showed a distribution of CMBs and CMD severity closely related to the agro-ecosystems where cassava is grown and to the main circulation pathways (Fig.1, 2, 3). The high CMD severity recorded in the mix secondary forest and in the deciduous high forest might be due to the abundance of populations of whiteflies, in opposite to the moderate disease in the evergreen forest that might be

due to a relatively less number of whiteflies. Abundance whiteflies might result to optimal development conditions in mix secondary forest considering the continuous cassava crop practice used; whereas biological control by predator in the primary forest might reduce populations of whiteflies (Tscharntke *etal.*, 2005).

The present study showed a clear link between highly diverse ecosystems and less severe impact of CMD in the Yangambi region. This result supports the diversity stability hypothesis concept considering that ecosystems with more species may minimize the effects of environmental disturbances such as plants disease epidemic (Tilman *etal.*, 2006; 2002; Hopper *et al.*, 2005). Given agricultural practices can reduce the ability of ecosystems to mitigate the effects of plants disease epidemic in an ecosystem (Tilman *etal.*, 2006, 2002; 1997); the high CMD severity observed in mix secondary forest might be consecutive to the intensive spatial continuous cultivation of cassava and to the reduced biodiversity in this agro-ecosystem.

The low diversity of CMBs strains identified was spread according to the various ecosystems (Fig.1); however the pattern of evolution of EACMV-UG isolates in evergreen forest suggests multiple introductions. In the evergreen humid forest area, the localised spread of CMBs might be explained by the spatial discontinuous of cassava cultivation system in the humid forest where geographical barrier imposed by no-cultivated area might prevent the movement of viruliferous insects between agro-ecosystems. Natural biological control of whiteflies is also hypothesised to explain the less number recorded in evergreen humid forest area (Tscharntke *et al.*, 2005), though data are still lacking in this area. Contrariwise in the mix secondary forest where the spatial continuous cropping system of cassava is practiced and abundant whiteflies movement is not limited. Infected cuttings flux was probably intense.

As AC2 & AC4 genes act in PTGS suppressing, variation in their sequences might have significance in CMD epidemic (Vanitharani *et al.*, 2005; 2004). So truncated AC4 might result from diversification and evolution of CMD viruses (Bull *etal.*, 2006) and probably contribute to their virulence. Similar observations were also made on TYLCV in the insular environment of Réunion where truncated AC4 protein for four amino acids had driven to evolution and diversification of virus (Delatte *etal.*, 2007). Dual infection in native legumes suggests that whiteflies might infect non-cassava plants when there is high epidemic pressure.

CMD viruses were also found in various native species in Africa (Alabi *etal.*, 2008; Ogbe *etal.*, 2006; Shonyika *etal.*, 2001; Fauquet & Fargette, 1990).

Since begomoviruses can be easily transmitted between cassava and non-cassava by their whitefly vector, thereby facilitating the survival of viruses and their concentration in environment. Other begomoviruses like *Mungbean yellow mosaic virus* of agricultural significance were identified in cultivated grain legumes in Pakistan (Ilyas *etal.*, 2010). The presence of those *Legumes yellow mosaic viruses* (begomoviruses) and the CMBs in native or cultivated legumes raises question of their probable recombination? As the role of those native legumes is not clearly specified in CMD pathosystem until now, one hypothesizes that selection by host plants may orientate the diversification of virus and may drive to the evolution of CMD viruses. Various selection pressures operating in plant viruses will differ

depending on plant host and vector population. (Garcia-Arenal *et al.*, 2003; 2001; Harisson, 2002). Mixed infections can also have an effect through viral interactions. The frequency of mixed infections and recombination are well known processes that contribute to begomoviruses diversification and evolution (Varsani *et al.*, 2009; Fondong *et al.*, 2000; Sanz *et al.*, 2000; Zhou *et al.*, 1997). The random spread of some EACMV-UG isolates in both agro-ecosystems hypothesized a preferential transmission of EACMV-UG by whiteflies (Maruthi *et al.*, 2005; Ariyo *et al.*, 2005; Colvin *et al.*, 2004). The prevalence of EACMV-UG well known in Uganda epidemic (Zhou *et al.*, 1997; Deng *et al.*, 1997), associated to sensitive genotypes (Ngeve *et al.*, 2003) led to consider Yangambi as a potential CMD epidemic zone according to Legg *et al.* (2011, 2006). Thus, the CMBs distribution is related to the agro-ecosystems in North-Eastern DR Congo; also the biodiversity richness in agro-ecosystems is evident in the mitigation of CMD.

Acknowledgements

This study was funded through a Belgian Technical Cooperation scholarship. Study was conducted in the Laboratory of Phytopathology at Catholic University of Louvain and the Agriculture University of Yangambi in DR Congo. Authors are grateful to UCL-ENGE- Geomatics for providing kindly the map of Yangambi.

References

- Alabi, J.O., Ogbe, F., Bandyopadhyay, R. and Lava Kumar, P. (2008) Alternative hosts of African cassava mosaic virus and East African cassava Cameroon virus in Nigeria. *Arch Virol* 153: 1743-1747.
- Alabi J., Kumar L. and Naidu A. (2011): Cassava mosaic disease: A curse to food security in Sub-Saharan Africa. *APSnet Features*.
- Ariyo, O.A., Koerbler, M., Dixon, A.G.O., Atiri, G.I. and Winter, S. (2005) Molecular variability and distribution of cassava begomoviruses in Nigeria. *J Phytopathol* 153: 226 -231.
- Ariyo O.A., Dixon A.G.O. & Atiri G.I. (2005): Whitefly *Bemisia tabaci* (Homoptera: Aleyrodidae) Infestation on Cassava Genotypes Grown at Different Ecozones in Nigeria. *Journal of Economic Entomology*, 98, (2): 611-617.
- Basavaprabhu, L., Patil and Fauquet, C.M. (2009) Cassava mosaic geminiviruses: actual knowledge and perspectives. *Mol Plant Pathol* 10(5): 685-701.
- Bisimwa E., Walangululu J. and Bragard C. 2012: Occurrence and Distribution of Cassava Mosaic Begomovirus Related to Agro-ecosystems in the Sud-Kivu Province, Democratic Republic of Congo. *Asian Journal of Plant Pathology* 6 (1): 1-12.

- Bisimwa E.B., Birindwa D.R., Yomeni M.O., Rudahaba N., Byamungu K., Winter S. and Bragard C. (2019) Multiple cassava viruses' co-infections and resurgence of pests are leading to severe symptoms and yield losses on cassava in the South-Kivu region, Democratic Republic of Congo. *Amer J of Plant Sci* 10 : 1969-1988
- Bull, S.E., Briddon, R.W., Sserubombwe, W.S., Nugi, K., Markham, P.G. and Stanley, J. (2006) Genetic diversity and phylogeography of cassava mosaic viruses in Kenya. *J Gen Virol* 87: 3053 – 3065.
- Colvin, J., Omongo, C.A., Maruthi, M.N., Otim-Nape, G.W. and Thresh, J.M. (2004) Dual Begomovirus infections and high *Bemisia tabaci* populations: two factors driving the spread of a cassava mosaic pandemic. *Plant Pathol* 53: 577-584.
- Delatte H., Holota H., Moury B., Reynaud B., Lett J.M. and Peterschmitt M. (2007) Evidence for a Founder effect after introduction of Tomato yellow leaf curl virus-Mild in an insular environment. *J Mol Evol* 65: 112-118.
- Deng, D., McGrath, D. F., Robinson, D. J., and Harrison, B. D. (1994) Detection and differentiation of Whitefly-transmitted geminiviruses in plants and vector insects by the polymerase chain reaction with degenerate primers. *Ann Appl Biol* 125: 327-336.
- Deng, D., Otim-Nape, G. W., Sangare, A., Ogwal, S., Beachy, R.N. and Fauquet, C.M. (1997): Presence of a new virus closely related to *East African cassava mosaic geminivirus* associated with cassava mosaic outbreak in Uganda. *Afr J Root Tuber Crops* 2: 23-28
- Duveiller, G., Defourny, P., Desclée, B. and Mayaux, P. (2008) Deforestation in Central Africa : Estimates at regional, national and landscape levels by advanced processing of systematically-distributed Landstat extracts. *Remote Sensing Environ* 112: 1969-1981.
- Fondong, V.N., Pita, J.S., Rey, M., De Konchko, A., Beachy, R.N. and Fauquet, C.M. (2000) Evidence of synergism between *African cassava mosaic virus* and a new double-recombinant geminivirus infecting cassava in Cameroon. *J Gen Virol* 81: 287-297.
- Garcia-Andreas S., Accotto G.P., Castillo J.N. and Moriones E. (2007) Founder effect, plant host and recombination shape the emergent population of begomoviruses that cause the Tomato yellow leaf curl disease in the Mediterranean basin. *Virology* 359: 302-312.
- Garcia-Arenal, F., Fraile, A. And Malpica, J.M. (2001) Variability and genetic structure of plant viruses populations. *Ann Rev Phytopathol* 39: 157-186.
- Garcia-Arenal, F., Fraile, A. And Malpica, J.M. (2003) Variation and evolution of plant viruses populations. *Int Microbiol* 6: 225-232.

- Hahn, S.K., Terry, E.R. and Leuschner, K. (1980) Breeding cassava for resistance to cassava mosaic disease. *Euphytica* 29: 673-683.
- Harrison, B.D. (2002) Virus variation in relation to resistance-breaking in plants. *Euphytica* 124: 181-192.
- Hooper, D.U, Chapin, F.S, Ewel, J.J., Hector, A., Inchausti, P., Lavorel, S. et al. (2005) Effects of biodiversity on ecosystem functioning: a consensus of current knowledge. *Ecol Monographs* 75(1): 3-35.
- Ilyas, M., Qazi, J., Mansoor, S. and Briddon, R.W. (2010) Genetic diversity and phylogeography of begomoviruses infecting legumes in Pakistan. *J Gen Virol* 91 (8): 2091-2101.
- Jones, D.R. (2003) Plant viruses transmitted by whiteflies. *Eur J Plant Pathol* 109: 195-219.
- Kufferath, H. and Ghesquiere, J. (1932) La mosaïque du manioc. *Compte Rendu Société Belge de Biologie* 109 : 1146-1148.
- Legg, J.P. and Ogwal, S. (1998) Changes in the incidence of African cassava mosaic Geminivirus and the abundance of its whitefly vector along south-north transects in Uganda. *J Appl Entomol* 122: 169-178.
- Legg, J. P. (1999) Emergence, spread and strategies for controlling the pandemic of cassava mosaic virus disease in east and central Africa. *Crop Prot* 18: 627-637.
- Legg, J. P. and Thresh, J.M. (2000) Cassava mosaic virus disease in East Africa: a dynamic disease in a changing environment. *Virus Res* 71: 135- 149.
- Legg, J.P. and Fauquet, C.M. (2004) Cassava mosaic geminiviruses in Africa. *Plant Mol Biol* 56: 585-599.
- Legg, J.P., Owor, B., Sseruwagi, P. and Ndunguru, J. (2006) Cassava mosaic viruses disease in East and Central Africa: epidemiology and management of a regional pandemic. *Adv Virus Res* 67: 355-418.
- Legg J.P., Jeremiah S.C., Obiero H.M., Maruthi M.N., Ndyetabula I., Okao-Okuja G., Bouwmeester H., Bigirimana S., Tata-Hangy W., Gashaka G., Mkamilo G., Alicai T., and Kumar L.P. (2011): Comparing the regional epidemiology of the cassava mosaic and Cassava brown streak pandemics in Africa. *Virus Research*, 159: 161–170.
- Legg, J.P., Lava Kumar, P., Makesh Kumar, T., Tripathi, L., Ferguson, M., Kanju, E., Ntawuruhunga, P.

- & Cuellar, W. (2015): Cassava virus diseases: Biology, epidemiology, and management. Pages 85-142 in: Control of Plant Virus Diseases - Vegetatively-Propagated Crops. G. Loebenstein and N. I. Katis, eds. *Advances in Virus Research*, Vol. 91. Elsevier Inc., Kidlington, Oxford, UK.
- Makana, J.R. and Thomas, S.C. (2006) Impacts of selective logging and agricultural clearing on forest structure, floristic composition and diversity, and timber tree regeneration in the Ituri Forest, Democratic Republic of Congo. *Biodiversity and Conservation* 15(4): 1375-1397.
- Maruthi, M.N., Alam, S.N., Kader, K.A., Rekha, A.R., Cork, A., Colvin, J. (2005) Nucleotide sequencing, whitefly transmission and screening tomato for resistance against two newly described Begomoviruses in Bangladesh. *Phytopathology* 95: 1472-1481.
- Maruthi, M.N., Jeremiah, S.C., Mohammed, I.U., and Legg, J.P. (2017) The role of the whitefly, *Bemisia tabaci* (Gennadius), and farmer practices in the spread of cassava brown streak ipomoviruses. *Journal of Phytopathology*, 165:707-717.
- Matic, S., Pais da Cunha, A.T., Thompson, J.R. and Tepfer, M. (2012) An analysis of viruses associated with Cassava mosaic disease in three Angolan provinces. *Journal of Plant Pathology*, 94 (2): 443-450.
- Monde, G., Walangululu, J., Winter, S. and Bragard, C. (2010) Dual infection by cassava begomoviruses in two leguminous species (Fabaceae) in Yangambi, North-Eastern Democratic Republic of Congo. *Arch Virol*, doi 10.1007/s00705-010-0772-3.
- Monde G., Walangululu J. and Bragard C. (2012) Screening cassava for resistance to cassava mosaic disease by grafting and whitefly inoculation. *Arch of Phytopathol and Plant Protection*, vol 45, 2189-2201
- Ndunguru, J., Legg, J.P., Aveling, T.A.S., Thompson, G. and Fauquet, C.M. (2005) Molecular biodiversity of cassava begomoviruses in Tanzania: evolution of cassava geminiviruses in Africa and evidence for East Africa being a center of diversity of cassava geminiviruses. *Virol J* 2: 21.doi:10.1186/1743-422X-2-21.
- Ngeve, J.M., Nukenine, E.N. and Dixon, A.G.O. (2003) Reaction of genotypes to the cassava mosaic disease in three district agroecologies in Nigeria. *J. Phytopathol* 151: 101-107.
- Njoroge, M.K., Mutisya, D.L., Miano, D.W. and Kilalo D.C. (2017) Whitefly species efficiency in transmitting cassava mosaic and brown streak virus diseases. *Cogent Biology*, 3, 1311499.
- Ogbe, F.O., Dixon, A.G.O., Hughes, J.A., Alabi, O.J. and Okechukwu, R. (2006) Status of cassava begomoviruses and their new natural hosts in Nigeria. *Plant Dis* 90:548-553.

- Otim-Nape, G.W., Bua, A., Thresh, J.M., Baguma, Y., Ogwal, S., Ssemakula, G.N., et al. (2000) The current pandemic of cassava mosaic virus disease in East Africa and its control. Natural Resources Institute, Chatham, UK.
- Sanz, A. I., Fraile, A., Gracia-Arenal, F., Zhou, X., Robinson, D.J., Khalid, S., et al. (2000) Multiple infection, recombination and genome relationships among begomovirus isolates found in cotton and other plants in Pakistan. *J Gen Virol* 81: 1839 -1849.
- Seal, S.E., VanderBosch, F. and Jeger, M.J. (2006) Factors influencing Begomovirus evolution and their increasing global significance: Implications for sustainable control. *Critical RevPlant Sci*25: 23 – 46.
- Shirima, R., Maeda, D. G., Kanju, E. E., Tumwegamire, S., Ceasar, G., Mushi, E., Sichalwe, C., Mtunda, K., Mkamilo, G., and Legg, J.P. (2019) Assessing the degeneration of cassava under high virus inoculum conditions in Coastal Tanzania. *Plant Disease*, 103: 2652-2664.
- Shonyika, S.A.,Thottappily, G., McGrath, F. and Harrison, B.D. (2001) Detection, relationships and properties of cassava mosaic Geminivirus in naturally infected castor oil plant, *Ricinus communis* L. in Nigeria. Page 20 *in*: The book of abstracts, Fifth Conf. Cassava Biotech. Network (CBN-V), Donald Danforth Plant Science Center, St. Louis.
- Stanley, J., Bisaro, D.M., Brown, J.K., Fauquet, C.M., Harrison B.D., Rybicki, E.P. and Stenger, D.C.(2004) Geminiviridae. In *Virus taxonomy Vth Report of the ICTV8th edition*. Edited by: Fauquet, C.M., Mayo, M.A., Maniloff, J., Desselberger, U. and Ball, L.A. London, Elsevier/Academic Press 2004: 301326.
- Tamura, K., Dudley, J., Nei, M. and Kumar, S. (2007) MEGA4Molecular Evolutionary Genetics Analysis (MEGA) software version 4.0. *Mol Biol Evol*24:1596-1599.
- Tilman, D., Lehman, C. L. and Thomson, K.T. (1997) Plant diversity and ecosystem productivity: Theoretical considerations. *Proc. Natl. Acad.Sci. USA* 94:1857-1861.
- Tilman, D., Cassman,K.G., Matson,P.A., Naylor,R. and Polasky,S. (2002) Agricultural sustainability and intensive production practices. *Nature*418: 671-677.
- Tilman, D., Reich, P.B. and Knops, J.M.H. (2006) Biodiversity and ecosystem stability in a decade-long grassland experiment. *Nature* 44(1): 629-632.
- Thresh, J.M. (1991) The ecology of tropical plant viruses. *Plant Pathol*40: 324-339.

- Tresh, J.M., Fargette, D. and Otim-Nape, G. W. (1994) Effects of *African cassava mosaic virus* on the yield of cassava. *Trop Sci*26:34-37.
- Tscharntke, T., Klein, A.M., Kruess, A., Steffa-Dewenter, I. and Thies, C. (2005) Landscape perspectives on agricultural intensification and biodiversity: ecosystem service management. *Ecol Letters* 8: 857-874.
- Vanitharani, R., Padmanabhan, C., Pita, J.S. and Fauquet, C.M. (2004) Differential roles of AC2 and AC4 of Cassava Geminiviruses in mediating synergism and suppression of posttranscriptional gene silencing. *J Virol*78 (17): 9487-9498.
- Vanitharani, R., Chellapan, P., Fauquet, C.M. (2005) Geminiviruses and RNA silencing. *Trends Plant Sci*10 (3): 144 – 151.
- Varsani, A., Monjana, A.L., Donaldson, L., Oluwafemi, S., Zinga, I., Komba, E.K. et al. (2009) Comparative analysis of *Panicum streak virus* and *Maize streak virus* diversity, recombination patterns and phylogeography. *Virol J*6: 194 doi 10.1186/1743-422x-6-194.
- Were, H.K., Winter, S. and Maiss, E. (2004) Occurrence and distribution of cassava begomoviruses in Kenya. *Ann Appl Biol*145: 175-184.
- Zhou, X., Liu, Y., Calvert, L., Munoz, C., Otim-Nape, G.W., Robinson, D. and Harrison, B.D. (1997) Evidence that DNA-A of a geminivirus associated with severe cassava mosaic disease in Uganda has arisen by interspecific recombination. *J Gen Virol*78: 2101-2111.