

# **BITE ASSURANCE: EVALUATING MICROBIAL QUALITY IN THE READY-TO-EAT FOODS SERVED BY MAKKAH'S CAFETERIAS"**

**Khalid Ahmad Al-Maliki**

Epidemiology Department, Faculty of Public Health & Health Informatics, Umm Al-Qura University, Makkah, Saudi Arabia

---

## **Abstract**

The consumption of ready-to-eat foods (RTEs) has witnessed a surge in the Kingdom of Saudi Arabia, particularly in the city of Makkah, owing to shifting demographics and lifestyle changes. This trend is influenced by the influx of itinerant workers, pilgrims, and visitors, leading to an increased preference for convenient RTE options, especially for breakfast. Cafeterias offering RTE foods have gained popularity due to their affordability, accessibility, and convenience. However, certain RTE food items, including those containing animal-derived ingredients like eggs, fish, meat, and poultry, are susceptible to contamination by various microorganisms such as bacteria and fungi. The contamination of RTE foods during processing and sandwich preparation has been reported, potentially resulting in cross-contamination and the presence of pathogenic microorganisms like *Staphylococcus aureus*, *Salmonella* species, *Bacillus* species, and *Escherichia coli*. Consequently, the quality of RTE foods can be significantly compromised. In this context, understanding the factors contributing to the contamination and deterioration of RTE foods is crucial for ensuring food safety and public health. This study aims to investigate the prevalence and implications of microorganism contamination in RTE foods in Makkah, Saudi Arabia, and proposes strategies to enhance the safety and quality of RTE meals.

---

**Keywords:** Ready-to-eat foods, RTE, contamination, microorganisms, food safety.

---

## **Introduction**

Ready-to-eat foods (RTEs) are items prepared in advance and ready for consumption only after heating without further processing or preparations. It could be raw or cooked meals. RTE food items consumption has recently increased in the Kingdom of Saudi Arabia, mainly in holly Makkah city, due to the rapid demographic change characterized by a change in lifestyle and a large number of itinerant workers, visitors, and pilgrims resulting in a large percentage of the population taking ready-to-eat food especially as breakfast's meal. In addition, cafeterias that serve RTE foods provide cheap, economical, and easily accessed items. Some RTE foods items contain raw materials of animal origin, such as eggs, fish, meat, and poultry, which can easily get contaminated by different microorganisms, including bacteria and fungi (Ashenafi, 1995).

The cross-contamination of RTE foods with pathogenic microorganisms could occur during the processing and preparation of fillings and sandwiches (Oranusi et al., 2013; Rahman et al., 2014; Sharma et al., 2014). Contamination of RTE food by pathogenic microorganisms like *Staphylococcus aureus*, *Salmonella* species, *Bacillus* species, and *Escherichia coli* leads to remarkable changes in food quality. Moreover, consequently causing food-borne illnesses and food poisoning are considered major public health issues that negatively affect the socioeconomic development and output of many fields such as tourism and trading (Newman et al., 2015).

Food-borne diseases and food poisoning problems are becoming an important issue worldwide (Al-Mazrou, 2004). In the Kingdom of Saudi Arabia in general and holly Makkah city in particular, food-borne illness and food poisoning are emerging as significant public health threats that render a high burden of diseases and negatively affect the socioeconomic development and productivity of many sectors. Several studies have reported that foods served by catering services were the primary source of many food-borne outbreaks (Osimani and Clementi, 2016). In Makkah city, increasing food poisoning cases were reported, especially during the Hajj and Umrah seasons. It was mainly due to the high consumption of RTE meals, especially those from cafeterias (Shirah et al., 2017).

We think minimizing fungal and bacterial loads in RTE foods served in cafeterias within Makkah city by following good hygiene practices and continuous microbiological assessment programs is necessary. Moreover, using microbiological testing results of RTE foods in Makkah city will provide an example for other cities in Saudi Arabia for dealing with ready food. However, very little research has been carried out on assessing microbial quality and safety of RTE foods in Saudi Arabia, especially those distributed within Makkah city. Therefore, this study aimed to determine the microbial safety of RTE food items that are served in some cafeterias in Makkah city, Saudi Arabia.

## **Materials and Methods**

### **Sample Collection**

Ready-to-eat food samples were collected randomly from different cafeterias located in different sites of Makkah City during the period March-April, 2021. A total of 108 samples represented six different types of ready-to-eat food (foul, falafel, boiled egg, fried egg, shakshuka, and sheep liver slices) collected from six different cafeterias and replicated three times. Collected samples were handled in sterile plastic bags and directly transferred to the microbiology lab for investigation.

### **Microbiological Analysis**

**Isolation and enumeration of bacteria.** Ten grams of each experimental sample was mixed with 90 mL Nutrient Broth (Biotech, UK), and serial dilutions of each food sample homogenate were prepared to reach  $10^{-3}$  dilutions. A 1 mL aliquot portions of the prepared dilutions were precisely distributed onto duplicate sterile plates of Nutrient Agar (Himedia, India), Eosin Methylene Blue (EMB) Agar (Titan Biotech, India), and Mannitol Salt Agar (MSA) (India mart, India) for total microbial load, *Escherichia coli*, and *Staphylococcus aureus*, respectively. Counting of bacterial colonies was performed after incubation of agar plates at 37 °C for 24 to 48 h, by using the colony counter (Gallenkamp, England). Bacterial colonies were expressed as colony-forming units per mL of sample homogenate (CFU/mL).

**Isolation and enumeration of fungi.** For fungal isolation, 10 grams of each sample were mixed in Sabouraud broth (India mart, India), and the same dilutions were prepared. A 1 mL portion of the dilution ( $10^{-3}$ ) was poured onto Sabouraud agar (India mart, India) medium supplemented with 0.005 gram/liter of rose Bengal (Sigma Aldrich, USA) for suppressing bacterial growth. The agar plates were incubated at 28 °C for 5-7 days; then, the developed colonies were counted and identified.

**Identification of Microbial Isolates.** The developed bacterial colonies were counted using colony counter, purified, and stored on nutrient agar slants at 4 °C for identification. Identification based on cultural morphology and biochemical tests, including carbohydrate utilization on Tri-sugar Iron (TSI) medium, IMViC test, starch hydrolysis, gelatin liquefaction, nitrate reduction, oxidase urease activity, and motility test were employed to confirm the purity of the isolates. The fungal morphology was studied macroscopically by observing the colony features (color, shape, size, and hyphae) and microscopically by a compound microscope according to the following references Gaddeyya et al. (2012), Domsch et al. (1980), and Barnett & Hunte (1972).

## Results and Discussion

### *Bacterial species isolated from ready-to-eat foods samples*

A total of 108 food samples, including 6 types (foul, falafel, boiled eggs, fried eggs, shakshuka, and sheep liver slices), were evaluated. The results showed in Table 1 that the highest aerobic plate counts were found in sheep liver slices sold by Cafeteria No 5 with the value of  $8.4 \times 10^3$  CFU/mL, while the lowest value was detected in foul sold by Cafeteria No.2 with a value of  $0.5 \times 10^3$  CFU/mL. *S. aureus* appeared in all food samples collected from all cafeterias. The highest count ( $9.8 \times 10^3$  CFU/mL) for *S. aureus* was detected in shakshuka sold by Cafeteria No.6, while the lowest count ( $1.2 \times 10^3$  CFU/mL) was observed in falafel sold by Cafeteria 1. Generally, it could be reported that all the tested samples were highly contaminated with *S. aureus*, and 42% of the samples were contaminated with *E. coli*. The total counts for *S. aureus* and *E. coli* (in shakshuka and sheep's liver slices) exceeded the recommended levels by the International Commission on Microbiological Specifications for Foods (ICMSF, 1996). The ICMSF (1996) recommends that ready-to-eat foods between 0- $10^3$  CFU are acceptable,  $10^4$ - $10^5$  CFU is tolerable, and  $10^6$  CFU and above are unacceptable.

**Table 1.** Mean total counts (CFU/mL) of each bacterial species isolated from ready-to-eat foods samples sold in Makkah city.

Vendors samples station	Food types	Bacteria		
		Aerobic plate count	<i>S. aureus</i> count	<i>E. coli</i> count
Cafeteria 1	Foul	$2.4 \times 10^3$	$3.6 \times 10^3$	ND
	Falafel	$3.5 \times 10^3$	$1.2 \times 10^3$	ND
	Boiled egg	$1.2 \times 10^3$	$4.6 \times 10^3$	ND
	Fried egg	$2.5 \times 10^3$	$1.3 \times 10^3$	ND
	Shakshuka	$5.7 \times 10^3$	$4.3 \times 10^3$	$0.4 \times 10^3$

	Sheep liver slices	$6.3 \times 10^3$	$3.1 \times 10^3$	$0.5 \times 10^3$
Cafeteria 2	Foul	$0.5 \times 10^3$	$3.4 \times 10^3$	$1.2 \times 10^3$
	Falafel	$3.4 \times 10^3$	$5.2 \times 10^3$	ND
	Boiled egg	$3.2 \times 10^3$	$2.5 \times 10^3$	ND
	Fried egg	$1.5 \times 10^3$	$3.3 \times 10^3$	ND
	Shakshuka	$4.3 \times 10^3$	$6.4 \times 10^3$	$2.3 \times 10^3$
	Sheep liver slices	$5.9 \times 10^3$	$3.6 \times 10^3$	$0.6 \times 10^3$
Cafeteria 3	Foul	$1.5 \times 10^3$	$3.5 \times 10^3$	ND
	Falafel	$3.2 \times 10^3$	$4.1 \times 10^3$	ND
	Boiled egg	$1.1 \times 10^3$	$3.2 \times 10^3$	ND
	Fried egg	$0.9 \times 10^3$	$3.7 \times 10^3$	$1.1 \times 10^3$
	Shakshuka	$5.9 \times 10^3$	$7.5 \times 10^3$	$2.4 \times 10^3$
	Sheep liver slices	$4.5 \times 10^3$	$7.5 \times 10^3$	$1.6 \times 10^3$
Cafeteria 4	Foul	$4.2 \times 10^3$	$8.7 \times 10^3$	ND
	Falafel	$3.4 \times 10^3$	$4.3 \times 10^3$	ND
	Boiled egg	$2.8 \times 10^3$	$4.9 \times 10^3$	ND
	Fried egg	$2.1 \times 10^3$	$3.5 \times 10^3$	ND
	Shakshuka	$4.8 \times 10^3$	$6.7 \times 10^3$	ND
	Sheep liver slices	$5.6 \times 10^3$	$6.8 \times 10^3$	$2.3 \times 10^3$
Cafeteria 5	Foul	$5.2 \times 10^3$	$5.2 \times 10^3$	ND
	Falafel	$2.8 \times 10^3$	$5.5 \times 10^3$	ND
	Boiled egg	$2.1 \times 10^3$	$4.3 \times 10^3$	$0.3 \times 10^3$
	Fried egg	$1.1 \times 10^3$	$4.2 \times 10^3$	ND
	Shakshuka	$4.7 \times 10^3$	$6.4 \times 10^3$	$4.2 \times 10^3$
	Sheep liver slices	$8.4 \times 10^3$	$7.9 \times 10^3$	$2.3 \times 10^3$
Cafeteria 6	Foul	$2.8 \times 10^3$	$4.2 \times 10^3$	ND
	Falafel	$4.4 \times 10^3$	$9.1 \times 10^3$	ND
	Boiled egg	$1.4 \times 10^3$	$4.2 \times 10^3$	$0.2 \times 10^3$
	Fried egg	$0.9 \times 10^3$	$2.2 \times 10^3$	ND

	Shakshuka	$5.9 \times 10^3$	$9.8 \times 10^3$	$1.7 \times 10^3$
	Sheep liver slices	$4.8 \times 10^3$	$7.5 \times 10^3$	$0.7 \times 10^3$
% of contaminated samples			100%	42%
Note. ND - Not detected, APC - Aerobic plate count.				

The consumption of cooked RTE foods analyzed herein might increase the risk of food-borne illness caused by various microorganisms, especially *S. aureus* and *E. coli*. The highest aerobic plate counts recorded in this study might be caused by different environmental factors, such as contaminated air, water, and utensils used in the meal preparation. Poor personal hygiene practices in the cafeterias could have also led to the contamination of these pathogens. Bezirtzoglou et al. (2000) reported that RTE food exposure to air or dust at the vending point is likely to increase loads of the bacteria as it appears that most bacteria are carried in aerosols by dust and wind. Contamination by the food producer or handlers is also the most common means of transmitting this germ. *S. aureus* could be transmitted through the dirty hands and mouths of the producers and customers. Similarly, Burt et al. (2003) stated that food contamination by *S. aureus* originates from man's respiratory passages, skin, and uncovered wounds. Thus, its persistence in cooked RTE foods might cause many health risks to consumers. Several reports indicate that most strains of *S. aureus* are known to be pathogenic due to their excreted heat-stable enterotoxins in direct relationship to their inoculum level (Adebayo-Tayo et al., 2012). *S. aureus* produces enzymes incorporated with staphylococcal invasiveness and many extracellular substances, which are enterotoxins that are stable at high temperatures and turn the food riskier even though it appears normal (Prescott et al., 2019). The appearance of the symptoms may differ with the quantity of the contaminated food consumed and the susceptibility of the people to the toxin. Some symptoms of staphylococcal food poisoning include vomiting, nausea, diarrhea, and abdominal pain (Amusan et al., 2010).

*E. coli* was not detected in most tested food samples, but it appeared in shakshuka and sheep's liver slices from most cafeterias. The highest count was  $4.2 \times 10^3$  recorded in shakshuka samples vended in cafeteria No. 5—a report by Idowu and Rowland (2006) showed that the highest aerobic plate numbers were found in a fang soup sold by street Vendors with a count of

$2.80 \times 10^6$  CFU/mL while the lowest count was observed in stew sold by stationary food vendors with shade (SVWS) with several

$1.20 \times 10^6$  CFU/mL. Moreover, the highest value of *S. aureus* was obtained in moimoi sold by a street vendor with the count of  $4.30 \times 10^6$  CFU/mL, and the lowest count was observed in stew sold by SVWS with the count of  $1.20 \times 10^3$  CFU/mL. *E. coli* counts were detected most in moimoi sold by MV with the value of  $2.20 \times 10^6$  CFU/mL. The presence of *E. coli* in cooked RTE foods indicates secondary contamination, as *E. coli* is known to be correlated with the gastrointestinal tract of warm-blooded animals and not found in the environment as a natural flora (Amusan et al., 2010). However, contamination can take place by the use of contaminated water. *E. coli* has been detected in foods sold at fast foods in a report by Fowoyo and Baba-Ali (2015). In this study, direct or indirect fecal

contamination may be the leading cause of *E. coli*, and *E. coli* belong to the Enterobacteriaceae genus, the leading causal agent for diarrhea, gastroenteritis, urinary tract infections, meningitis, nosocomial pneumonia, and dysentery. The strain of *E. coli* named Enterohaemorrhagic *E. coli* can cause food-borne diseases similar to the *E. coli* O157H7 strain, which causes a severe and potentially fatal illness called Hemorrhagic colitis which is characterized by bloody diarrhea and severe abdominal pain (Evans & Evans, 1996). Following the Public Health Laboratory Service (UK) criteria, the count of *E. coli* in RTE food was defined as <20 CFU/mL (satisfactory), 20– <100 CFU/ML (acceptable), ≥100 CFU/mL (Health Protection Agency, 2009). In our findings, the counts of *E. coli* in the samples of shakshuka and sheep's liver slices can be considered unacceptable.

### ***Fungal species isolated from ready-to-eat foods samples***

Data shown in Table 2 indicated that 21 fungal species belonging to 7 genera were identified. The number of isolated fungi varied according to different meals. The least fungal number (9 species) appeared in fried egg sandwiches followed by 12, 14, 15, 18, and 20 species in shakshuka, boiled egg, falafel, sheep's liver slices, and fowl samples, respectively. *Aspergillus* appeared in most samples collected from cafeterias, represented by six species. Among *Aspergillus*, *A. flavus* was the highest, and its occurrence ranged between 50-83% of samples. Also, *A. niger* and *A. parasiticus* were among the common *Aspergillus* species found in the samples. Among samples analyzed herein, shakshuka samples were highly contaminated by *Aspergillus* species (50% by *A. flavus*, 83% by *A. niger*, 100% by *A. ochraceus*, and 50% by *A. parasiticus*). *Mucor racemosus* emerged in remarkable count in falafel samples (50%) and did not emerge in Shakshuka.

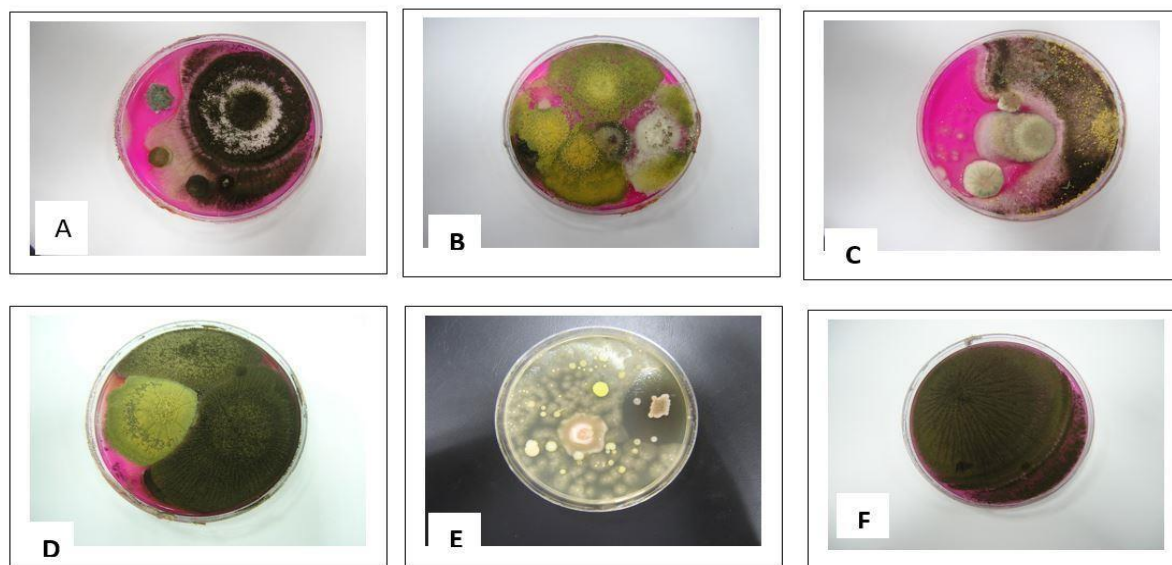
Four species of *Penicillium* were isolated, and among them, *P. aurantiogresum* was the most commonly isolated. It encountered 72%, 50%, 67%, and 83% in fowl, falafel, boiled egg, and sheep's liver slices, respectively. *P. cyclopium* appeared in 5 types of samples with remarkable accounts. *Rhizopus nigricans* were found in high occurrence in fowl (72%) and falafel (52%). About 100% of fowl and 89% of falafel samples were contaminated by *Stachybotrys chartarum*. *Trichoderma* sp. was found in five samples, mostly fowl (83%) and fried egg (50%). Uzeh et al. (2009) revealed that microorganisms found in salad constitute raw vegetables include *Mucor* sp., *Aspergillus fumigatus*, *Trichoderma*, *Neurospora crassa*, and *Aspergillus niger*. Barnett et al. (2000) reported several mycotoxins isolated from various foods. For instance, *Aspergillus* and *Penicillium* produced aflatoxins. The aflatoxins have been found in legumes, grains, fruits, meats, spices, cheeses, milk, rice, corn, cotton seeds. Other toxins with carcinogenic, hemorrhagic, hepatotoxic, neurotic uterotrophic effects have been found in foodstuff and recorded as metabolites of fungi (Jeswal & Kumar, 2015). Ochratoxins are toxins excreted by *Aspergillus ochraceus*, *A. sulphureus*, *A. malleus*, and *A. ochraceus* can be found in soils and decaying vegetation, grains, wheat, corn, cotton seeds, legumes, peppers, onions, and pears (Adams & Moss, 2002).

<b>Table 2.</b> Mean total count and occurrence remarks (O.R.) of each fungal species (CFU/mL) isolated from ready-to-eat food samples sold in Makkah city.
---

Fungal genera & species	CFU/mL	O.R. out of 6 sites	Foul	Falafel	Boiled egg	Fried egg	Shakshuka	Sheep liver slices
(% count of each isolate out of 18 samples)								
<i>Alternaria alternata</i>	11	H	00	00	3(17%)	3(17%)	3(17%)	2(11%)
<i>Aspergillus</i>								
<i>A. flavus</i>	56	VH	9(50%)	4(22%)	7(39%)	15(83%)	9(50%)	12(67%)
<i>A. niger</i>	42	VH	11(61%)	00	6 (33%)	9(50%)	15(83%)	1(5.6%)
<i>A. ochraceus</i>	32	H	3(17%)	00	3(17%)	00	18(100%)	8 (44%)
<i>A. parasitus</i>	27	VH	6 (33%)	3(17%)	14(78%)	00	9(50%)	4(22%)
<i>A. sydowi</i>	26	H	10(56%)	00	7(39%)	00	4(22%)	5(28%)
<i>A. ustus</i>	14	L	7(39%)	3(17%)	00	00	00	4(22%)
<i>Cladosporium sp.</i>	12	L	6(33%)	00	00	00	10(56%)	6(33%)
<i>Mucor racemosus</i>	36	VH	4(22%)	9(50%)	5(28%)	4(22%)	00	4(22%)
<i>Fusarium</i>								
<i>F. culmorum</i>	16	M	2(11%)	5(28%)	6(33%)	00	00	3(17%)
<i>F. solani</i>	3	R	3(17%)	00	00	00	7(39%)	00
<i>Penicillium</i>								
<i>P. aurantiogriseum</i>	62	VH	13(72%)	9(50%)	12(67%)	6(33%)	00	15(83%)
<i>P. digitatum</i>	29	H	5(28%)	8(44%)	7(39%)	00	5(28%)	9(50%)
<i>P. citrinum</i>	21	H	8(44%)	4(22%)	4(22%)	00	00	00
<i>P. cyclopium</i>	33	VH	10(56%)	4 (22%)	7(39%)	7(39%)	00	9(50%)
<i>Rhizopus nigricans</i>	38	VH	13(72%)	5(52%)	6(33%)	4(22%)	4(22%)	6(33%)
<i>Stachybotys chartarum</i>	40	VH	18(100%)	16(89%)	7(39%)	6(33%)	00	5(28%)
<i>Trichothicium roseum</i>	17	M	8(45%)	4(22%)	00	00	00	00
<i>Phoma sp.</i>	8	R	4(22%)	4(22%)	00	00	00	00
<i>Trichoderma sp.</i>	44	VH	15(83%)	6(33%)	00	9(50%)	5(28%)	2(11%)
<i>Verticillium sp.</i>	7	L	2(11%)	4(22%)	00	00	00	1(0.06%)

No. of isolated fungi	20	15	14	9	12	18
Note. Rare (R) = Appeared in 1 site, Low (L) = Appeared in 2 sites, Medium (M) = Appeared in 3 sites, High (H) = Appeared in 4 sites, and Very High (VH) = Appeared in 5 -6 sites.						

Patulin is the primary toxic metabolite produced by *Penicillium* (Bennett & Klich, 2003). *Fusarium culmorum* and *Trichothecium roseum* appeared moderately, and the least encountered fungal species were *A. ustus*, *Cladosporium* sp., and *Verticillium* sp. (Table 2). The isolation of *S. aureus*, *Aspergillus niger*, *Aspergillus fumigatus*, *Mucor* sp, and *Penicillium* sp, are consistent with the findings of Attiya et al. (2015), Taalo et al. (2008) and Oranusi, et al. (2013), in which these microorganisms were found in RTE foods. Molds like *Mucor* sp and *Aspergillus* sp. Contaminated food samples through dust and soil as they disperse in the form of spores abundant in the environment (Apinis, 2003). Molds in food samples are a severe health threat due to mycotoxin production (Makun et al., 2009).



**Picture 1.** Most common isolated fungi and bacteria. **A).** *Aspergillus niger* (black), *A. fumigatus* (olive colony), and *A. ustus* (brown colony); **B).** *A. flavus* (yellow-green) mixed with *Stachybotrys chartarum* (black); **C).** *Curvularia lanata* (black color) and *A. ustus* (grey colonies); **D).** *Alternaria alternate* (black) and *Trichoderma* SP. (green); **E).** Mixed cultures of *S. aureus* (golden) and *E. coli* (white); **F).** Pure culture of *Stachybotrys chartarum*.

### Conclusion

Ready-to-eat foods (RTEs), especially of animal origin, could be considered as potential sources for microbial infections in humans. This study revealed that RTE foods served in cafeterias in Makkah city had unsatisfactory microbiological contamination; thus, it may increase the potential risk of food-borne poisoning and diseases among consumers. Accordingly, it is a priority for relevant public health and food safety agencies to establish training programs on food safety and sanitary in cafeterias, especially following the regulations of hazard analysis and critical control points (HACCP) principles during all

food processing steps. All staff members, including administrators and the people who work in the kitchen, must be trained.

### **Acknowledgment**

The authors appreciate the cooperation of the Faculty of Health and Health Informatics, Umm Al -Qura University, and cafeteria owners for consent and facilitating sampling.

**Conflict of interest.** The authors declare that there is no conflict of interest regarding the publication of this paper.

### **ORCID ID**

Ramadan Ali Mohamed Badran: <https://orcid.org/0000-0003-3932-7396>

Mutasim Mohamed Khalafalla: <https://orcid.org/0000-0002-8214-9698>

Hatim Abdullah Natto: <https://orcid.org/0000-0003-2570-6264>

### **References**

- Adams, M.R. & MOSS, M.O. (2004). Food Microbiology. (2nd ed.), Cambridge: Royal Society of Chemistry. p237.
- Adebayo-Tayo, B.C., Okonko, I.O., Esen, C.U. & Odu, N.N. (2012). Microorganisms associated with spoilage of stored vegetables in Uyo Metropolis, Akwa Ibom State, Nigeria. *Nature and Science*, 10(3), 23-32.
- Al-Mazrou, Y.Y. (2004). Food poisoning in Saudi Arabia. Potential for prevention? *Saudi Medical Journal* 25, 11-14.
- Amusan, E., Oramadike, C.E., Abraham-Olukayode, A.O. & Adejonwo, O.A. (2010). Bacteriological quality of street vended smoked blue whiting (*Micromesistius poutasou*). *Internet Journal of Food Safety*, 12(6), 122-126.
- Apinis, A.E. (2003). Bio-deterioration of Materials. *Applied Science*. Publishers London, 2(12), 493-498.
- Ashenafi, M. (1995). Bacteriological profile and holding temperature of ready-to-serve food item in an open market in Awassa, Ethiopia. *Tropical and Geographical Medicine*, 47, 1-4.
- Attiya, M., Magdy, M. & Marwa, T. (2015). Assessment of the microbiological quality of public restaurants and street vended ready-to-eat Koshari meals. *International Journal of Applied Science and Biotechnology*, 3(3), 452-458.
- Barnett, H.L. & Hunter, B.B. (1972). *Illustrated Genera of Imperfect Fungi*. (3rd ed.), Burgess Publishing Co., Minneapolis, p241.

- Barnett, J.A. Payne, R.W. & Yarrow, D. (2000). *Yeasts: Characteristics and Identification*. (3rd ed.), Cambridge University Press, Cambridge, p1139.
- Bennett, J.W. & Klich, M. (2003). Mycotoxins. *Clinical Microbiology Reviews*, 16, 497-516.
- Bezirtzoglou, E., Maipa, V., Voidarou, C., Tsiotsias, A. & Papapetropoulou, M. (2000). Food-borne intestinal bacterial pathogens. *Microbial Ecology in Health and Disease*, 12(2), 96-104.
- Burt, M., Volel, C. & Finkel, M. (2003). Safety of vendor-prepared foods: Evaluation of processing mobile food vendors in Manhattan. *Public Health Reports*, 118, 470-476.
- Domsch, K.H., Gams, W. & Anderson, T.-H. (1980). *Compendium of Soil Fungi*. (2nd Ed.), Academic Press, London, 1, 1-860
- Evans, D.J.J. & Evans, D.G. (1996). *Escherichia Coli* in Diarrheal Disease. In: Baron, S., editor. *Medical Microbiology*. (4th ed). Galveston (TX): University of Texas Medical Branch at Galveston.
- Fowoyo, P.T. & Baba-Ali, R. (2015). Microbiological assessment of fast foods sold in Lokoja Metropolis, Nigeria. *Open Access Library Journal*, 2, e1541.
- Health Protection Agency (2009). *Guidelines for Assessing the Microbiological Safety of Ready-to-Eat Foods*. London: Health Protection Agency.
- Gaddeyya, G., Niharika P.S., Bharathi, P. & Kumar, P.K.R. (2012). Isolation and identification of soil mycoflora in different crop fields at Salur Mandal. *Advances in Applied Science Research*, 3, 2020-2026.
- Idowu, O.A. & Rowland, S.A. (2006). Oral fecal parasites and personal hygiene of food handlers in Abeokuta, Nigeria. *African Health Sciences*, 6, 160-164.
- International Commission on Microbiological Specifications for Foods (ICMSF, 1996). *Microorganisms in Foods 5: Microbiological Specifications of Pathogens*.
- Jeswal, P. & Kumar, D. (2015). Mycobiota and natural incidence of aflatoxins, ochratoxin A, and citrinin in Indian spices confirmed by LC-MS/MS. *International Journal of Microbiology*, 242486.
- Makun, H.A., Gbodi, T.A, Akanya, O.H., Salako, A.E. & Ogbadu, G.H. (2009). Health implications of toxigenic fungi found in two Nigerian staples: Guinea corn and rice. *African Journal of Food Science*, 3(9), 250-256.

- Newman, K., Leon, J., Rebolledo, P. & Scallan, E. (2015). The impact of socioeconomic status on food-borne illness in high-income countries: A systematic review. *Epidemiology and Infection*, 143, 2473-2485.
- Oranusi, S.U., Oguoma O.I. & Agusi E. (2013). Microbiological quality assessment of foods sold in student's cafeterias. *Global Research Journal of Microbiology*, 3(1), 1-7.
- Osimani, A. & Clementi, F. (2016). The catering industry as a source of campylobacteriosis in Europe- A review. *International Journal of Hospitality Management*, 54, 68-74.
- Prescott, M., Harley, P. & Klan, D.A. (2019). *Microbiology*. (6th Ed.). McGraw Hill New York Publishers USA, p910.
- Rahman, M.M., Rahman, M.H. & Ansary, M.P. (2014). Safety issues of street foods in Bangladesh. *Time Journal of Biological Sciences and Technology*, 3, 21-32.
- Sharma, I. & Mazumdar, J. (2014). Assessment of the bacteriological quality of ready-to-eat foods vended in streets of Silchar city, Assam, India. *Indian Journal of Medical Microbiology*, 32(2), 169-171.
- Shirah, B., Zafar S., Alferaidi, O. & Sabir, A. (2017). Mass gathering medicine (Hajj Pilgrimage in Saudi Arabia): The clinical pattern of pneumonia among pilgrims during Hajj. *Journal of Infection and Public Health*, 10, 277-286.
- Taulo, S., Wetlesen, A., Abrahamsen, R., Mkakosya, R. & Kululanga, G. (2008). Microbiological quality of water, associated management practices, and risks at source, transport, and storage points in a rural community of Lungwena, Malawi. *Africa Journal of Microbiological Research*, 7(2), 131-137.
- Uzeh, R.E., Alade, F.A. & Bankole, M. (2009). The microbial quality of pre-packed mixed vegetable salad in some retail outlets in lagos, Nigeria. *African Journal of Food Science*, 3(9), 270-272.